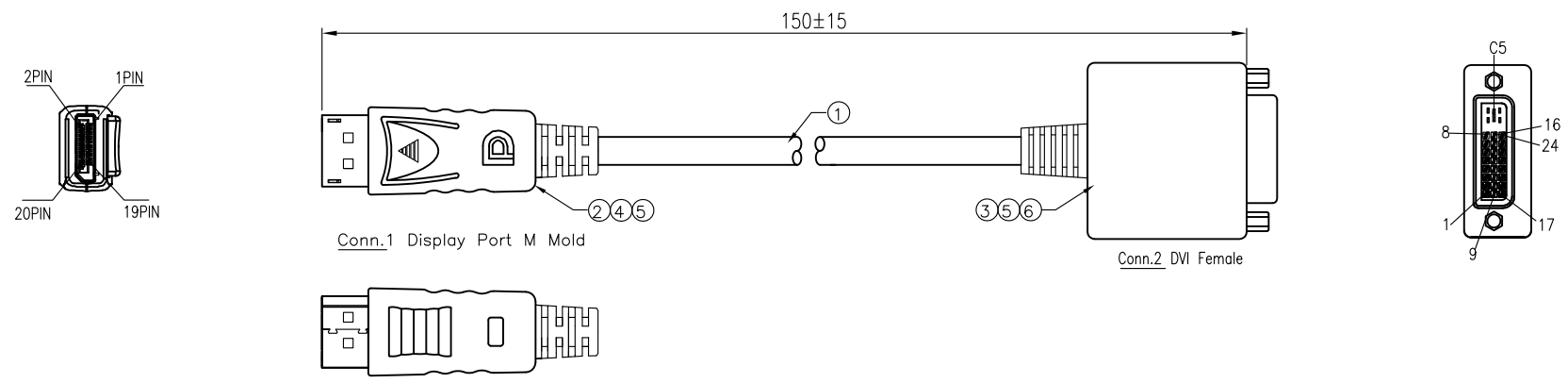


This document is the property of Amphenol Corporation and is delivered on the express condition that is not to be disclosed, reproduced or used, in whole or in part, for manufacture or sale by anyone other than Amphenol Corporation without its prior consent, and that no right is granted to disclose or to use any information in this document.

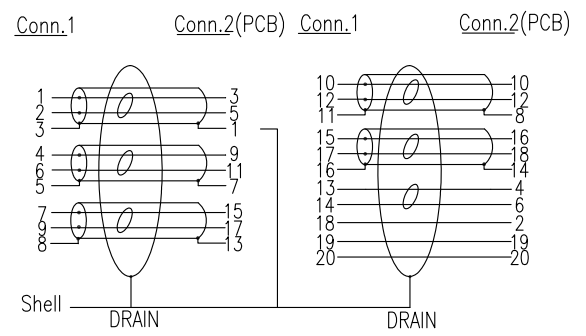
The marking on this product doesn't contain environmental hazardous materials per Material Specification 55-00259 for Sony GP compliant or per directive 2002/95/EC for RoHS compliant.

REVISIONS				
SYM	ECN No.	DESCRIPTION	DATE	APPROVED
AX1		NON-RELEASE REVISION	06/10/2010	Roger Tsai

PRELIMINARY RELEASE
SUBJECT TO CHANGE



PIN Assignment



Features

1. Support DisplayPort 1.1a input and DVI output.
2. Support DVI highest video resolution 1080p.
3. Support DVI 225MHz/2.25Gbps per channel (6.75Gbps all channel) bandwidth.
4. Support DVI 12bit per channel (36bit all channel) deep color.
5. Powered from DisplayPort source.

ITEM	DESCRIPTION	Q'TY	UNIT
6	PLASTIC HOOD FOR DVI FEMALE, MATERIAL: ABS, COLOR: BLACK	1	SET
5	OUTSIDE MOLDING 45P PVC PMS: BLACK	12	g
4	INSIDE MOLDING: PE	4	g
3	DISPLAY PORT TO DVI BLANK PCB+SMT	1	PCS
2	DISPLAY PORT MALE PIN GOLD, INSULATION: BLACK, SHELL NICKEL PLATED	1	SET
1	DISPLAY PORT CABLE UL20276 [30AWG(7/0.10TC)*1P+D+AL+MYLAR]*5+30AWG (7/0.10TC)*5C+AL/MY+D.W+BD+JACKET COLOR: BLACK OD: 6.0±0.2 mm	0.15	m

TOLERANCE	APPROVALS	DATE
X. X.X ±0.30 X.XX ±0.20 X.XXX ±0.10	DRAWN Roger Tsai	06/10/2010
	CHECKED Aqua Chou	06/10/2010
	APPROVED Roger Tsai	06/10/2010
ANGULAR ±1°	DWG TYPE CUST DWG	PROJECT CODE OTHER
UNLESS OTHERWISE SPECIFIED		

TITLE	UNIT	SIZE	SHEET
DISPLAY PORT MALE TO DVI FEMALE ADAPTER	mm	A3	1 OF 1
	SCALE NA		

Amphenol [®]	
Amphenol Corporation Amphenol Taiwan Corporation	
PART No.	G46B13001EU
DWG No.	G46B13001EU
REV.	AX1