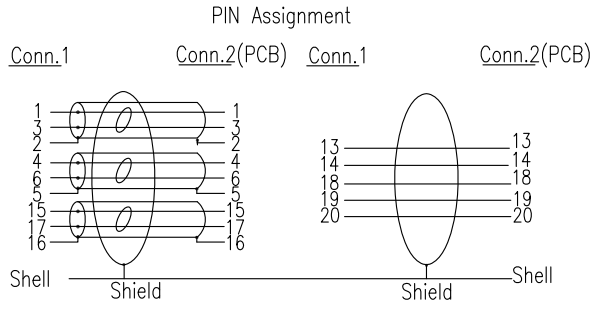
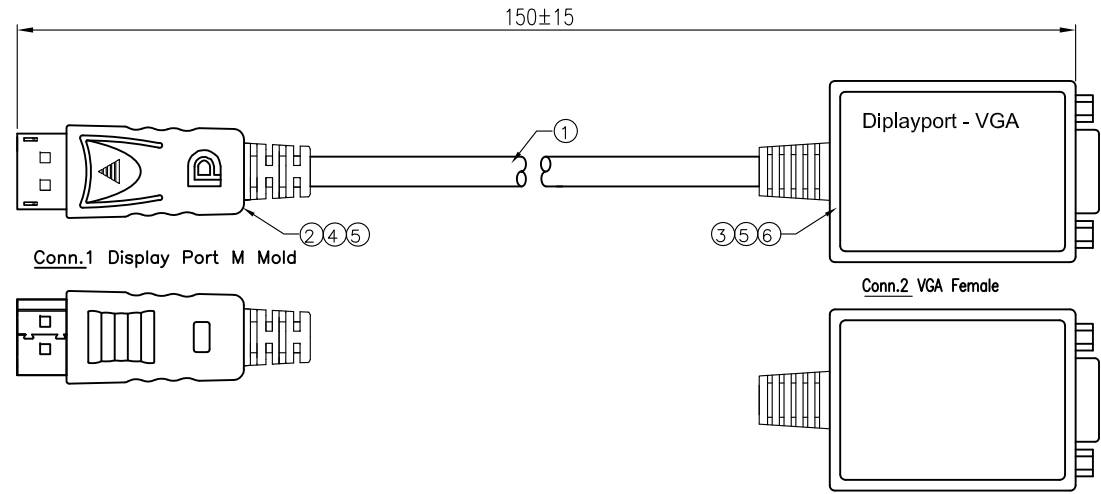
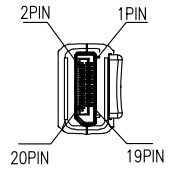


This document is the property of Amphenol Corporation and is delivered on the express condition that is not to be disclosed, reproduced or used, in whole or in part, for manufacture or sale by anyone other than Amphenol Corporation without its prior consent, and that no right is granted to disclose or to use any information in this document.

The marking on this product doesn't contain environmental hazardous materials per Material Specification 55-00259 for Sony GP compliant or per directive 2002/95/EC for RoHS compliant.

PRELIMINARY RELEASE  
SUBJECT TO CHANGE

REVISIONS				
SYM	ECN No.	DESCRIPTION	DATE	APPROVED
AX1		NON-RELEASE REVISION	06/10/2010	Roger Tsai



**FEATURES**

- This DisplayPort to VGA converter has many features that enable it to perform in a superior manner. Among those features you will find:
1. DisplayPort 1.1a compliant receiver offering 5.4 Gbps bandwidth over 2 lanes
  2. Integrated triple 10-bit, 162 MHz video DAC for analog VGA signal output
  3. Supports up to 1080p, 1920 x 1200 reduced blanking video resolution
  4. EDID pass-through from PC source to display
  5. Spread Spectrum (de-spreading) for EMI reduction
  6. Automatic sink detection
  7. Low power standby mode operation initiated based on sink detection status
  8. Powered from DisplayPort source
  9. 3.3V IO, 1.2V Core
  10. Low power operation – Active 400mW, standby mode 15mW

ITEM	DESCRIPTION	Q'TY	UNIT
6	PLASTIC HOOD FOR VGA FEMALE, MATERIAL: ABS, COLOR: BLACK	1	SET
5	OUTSIDE MOLDING 45P PVC PMS: BLACK	12	g
4	INSIDE MOLDING: PE	4	g
3	DISPLAY PORT TO VGA BLANK PCB+SMT	1	PCS
2	DISPLAY PORT MALE PIN GOLD, INSULATION: BLACK, SHELL NICKEL PLATED	1	SET
1	UL20276 [28AWG(7/0.127TC)*1P+D+AL+MYLAR]*3+28AWG (7/0.127TC)*5C+AL/MY+D.W+BD+JACKET COLOR: BLACK OD: 6.0±0.2 mm	0.15	m

TOLERANCE	APPROVALS	DATE
X. X.X ±0.30 X.XX ±0.20 X.XXX ±0.10	DRAWN Roger Tsai CHECKED Aqua Chou APPROVED Roger Tsai	06/10/2010 06/10/2010 06/10/2010
ANGULAR ±1°	DWG TYPE CUST DWG	PROJECT CODE OTHER
UNLESS OTHERWISE SPECIFIED		

TITLE		
DISPLAY PORT MALE TO DVI FEMALE ADAPTER		
UNIT mm	SIZE A3	PART No. G46B14001EU
SCALE NA	SHEET 1 OF 1	DWG No. G46B14001EU
		REV. AX1

Amphenol®

Amphenol Corporation  
Amphenol Taiwan Corporation

