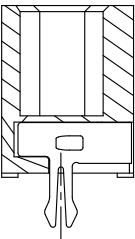
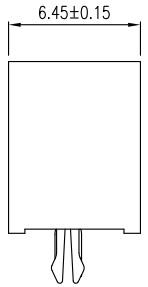
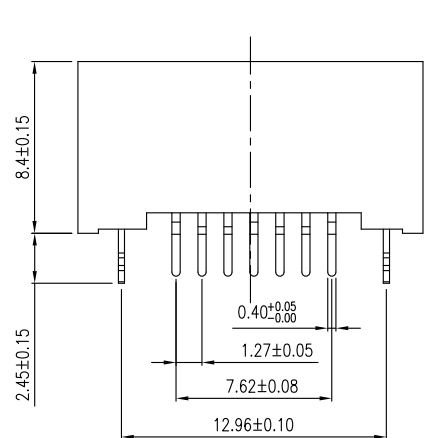
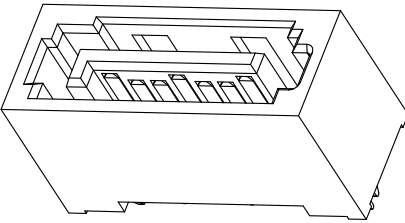
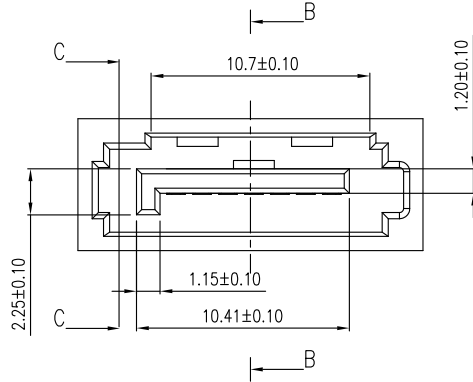


PRELIMINARY RELEASE  
SUBJECT TO CHANGE

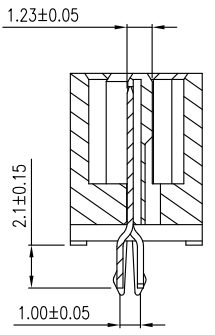
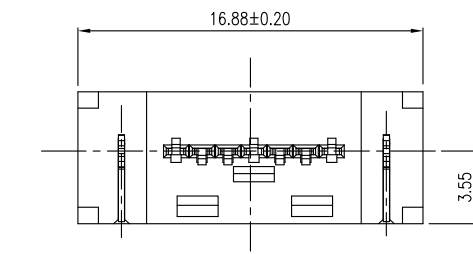
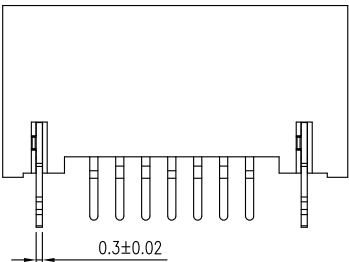
REVISIONS				
SYM	ECN No.	DESCRIPTION	DATE	APPROVED
AX1		UNAPPROVED REVISION	12/01/2009	Arron Lin

This document is the property of Amphenol Corporation and is delivered on the express condition that it is not to be disclosed, reproduced or used, in whole or in part, for manufacture or sale by anyone other than Amphenol Corporation without its prior consent, and that no right is granted to disclose or to use any information in this document.

The marking on this product doesn't contain environmental hazardous materials per Material Specification 55-00259 for Sony GP compliant or per directive 2002/95/EC for RoHS compliant.



SECTION C-C

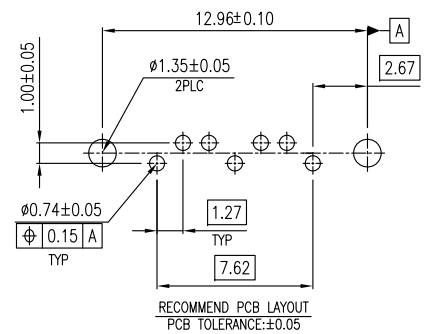


SECTION B-B

G16ADX21PEU  
CONTACT FINISH  
0: GOLD FLASH  
1: 15u" GOLD  
2: 30u" GOLD

NOTES:

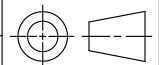
- MATERIAL:  
HOUSING: HIGH TEMPERATURE THERMO PLASTIC UL94V-0  
TERMINAL: BRASS  
BOARBLOCK: BRASS
- FINISH:  
TERMINAL:  
CONTACT AREA: SELECTIVE GOLD PLATED.  
SOLDERING AREA: TIN PL. 100 μ" THK MIN.  
UNDER PL.: OVER ALL NICKEL PL. 50 μ" THK MIN.  
BOARBLOCK:  
SOLDERING AREA: TIN-LEAD PL. 100 μ" THK MIN.  
UNDER PL.: OVER ALL NICKEL PL. 50 μ" THK MIN.
- THIS PRODUCT DOESN'T CONTAIN ENVIRONMENTAL HAZARDOUS PER DIRECTIVE 2002/95/EC FOR RoHS COMPLIANT.



TOLERANCE	DRAWN	APPROVALS	DATE	TITLE	UNIT	SIZE	PART No.
X. ±0.30	DESIGNED	Daniel Hsieh	12/01/2009	SATA CONNECTOR 7 POS., 1.27 PITCH, VERTICAL, DIP TYPE	mm	A3	G16ADX21PEU
X.X ±0.20	CHECKED	Roger Tsai	12/01/2009				
X.XXX ±0.10	APPROVED	Arron Lin	12/01/2009	UNLESS OTHERWISE SPECIFIED	NA	1 OF 1	G16ADX21PEU
ANGULAR ±1°	DWG TYPE	CUST DWG	PROJECT CODE SKT				

**Amphenol**®

Amphenol Corporation  
Amphenol Taiwan Corporation



SCALE

SHEET 1 OF 1

DWG No.

G16ADX21PEU

REV. AX1