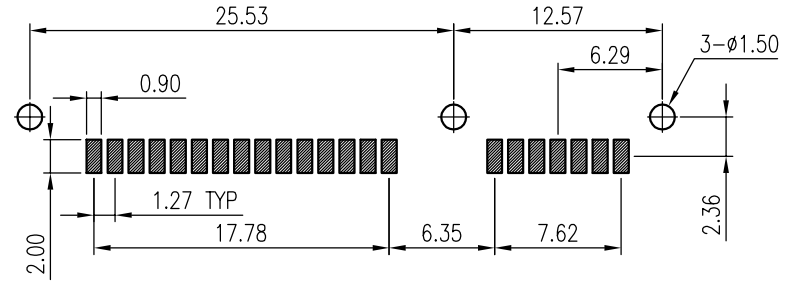
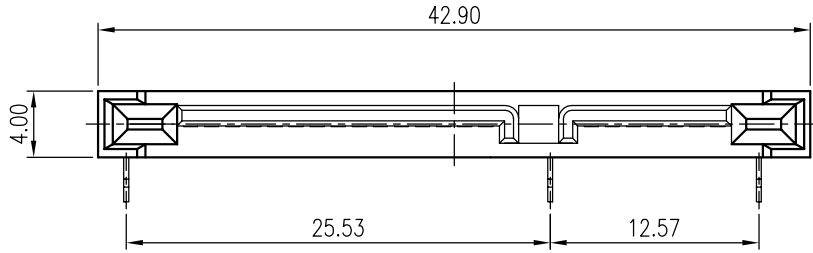


This document is the property of Amphenol Corporation and is delivered on the express condition that it is not to be disclosed, reproduced or used, in whole or in part, for manufacture or sale by anyone other than Amphenol Corporation without its prior consent, and that no right is granted to disclose or to use any information in this document.

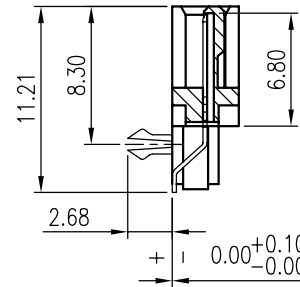
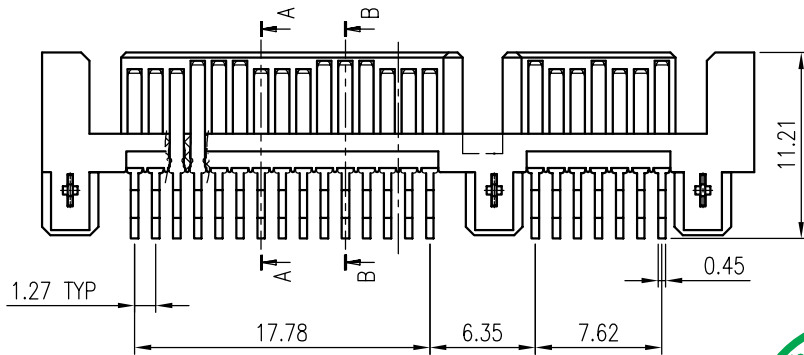
CUSTOMER DRAWING

REVISIONS				
SYM	ECN No.	DESCRIPTION	DATE	APPROVED
A		RELEASE FOR RoHS	09/16/2005	Henry Ko

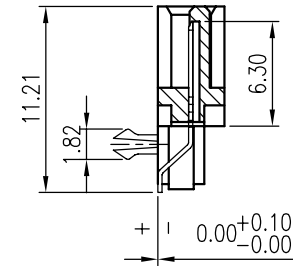
ORIGINAL



RECOMMENDED PCB LAYOUT
(ALL TOLERANCES ARE ± 0.05)



SECTION B-B



SECTION A-A



NOTES:

- INSULATOR: LCP, UL 94V-0 RATED, COLOR- BLACK
- CONTACT: BRASS, SELECTIVE GOLD PLATING ON CONTACT AREA, TIN PLATING ON SOLDERING TAIL, NICKEL UNDERPLATED OVERALL
CONTACT FINISH CODES: "0"- GOLD FLASH
"1"- 15 μ " GOLD
"2"- 30 μ " GOLD
- BOARDLOCK: COPPER ALLOY, TIN PLATED
- THIS PRODUCT DOESN'T CONTAIN ENVIRONMENTAL HAZARDOUS MATERIALS PER DIRECTIVE 2002/95/EC FOR RoHS.

TOLERANCE m/m	APPROVALS	DATE	TITLE		Amphenol®	
x. \pm	DRAWN Sondra Sang	09/16/05	G16 SERIES		Amphenol Corporation	
x.x ± 0.38	CHECKED Laura Su	09/16/05	SERIAL ATA CONNECTOR		Amphenol Taiwan Corporation	
x.xx ± 0.25	APPROVED Ken Lin for	09/16/05	POWER & SIGNAL, PLUG		SCALE N.A. SHEET 1 OF 1	
x.xxx ± 0.20			7P+15P, R/A SMT		DRAWING NO. SKT-G16CE1X11WEU-16	
ANGULAR $\pm 2^\circ$			SIZE A4	PART NO. G16CE 1X1 1 WEU	REV. A	
UNLESS OTHERWISE SPECIFIED			UNIT MM			