

This document is the property of Amphenol Corporation and is delivered on the express condition that it is not to be disclosed, reproduced or used, in whole or in part, for manufacture or sale by anyone other than Amphenol Corporation without its prior consent, & that no right is granted to disclose or to use any information in this document.

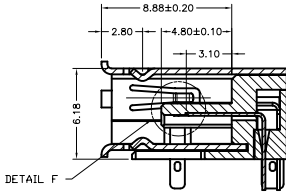
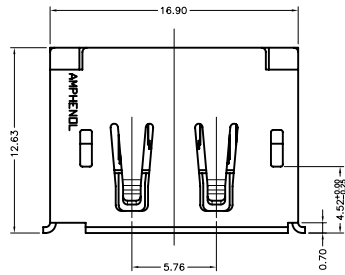
REVISIONS				
SYM	ECN	DESCRIPTION	DATE	APPROVED
1	HK5560	New Release	1/19/09	IP

Customer Drawing

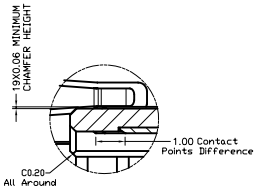
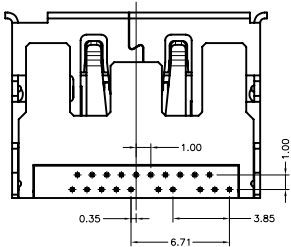
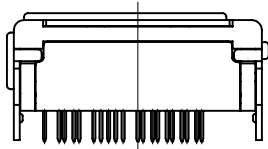
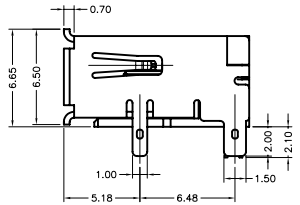
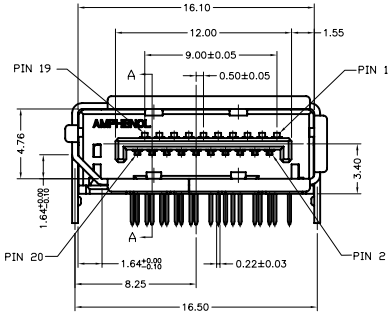


NOTES:

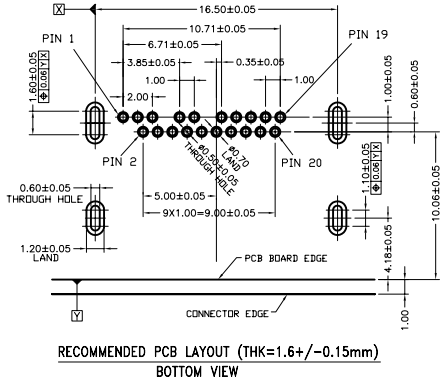
- MATERIAL:**
HOUSING: HIGH TEMPERATURE PLASTIC UL94V-0, BLACK.
CONTACT: PHOSPHOR BRONZE ,THICKNESS=0.20mm
SHIELD: BRASS OR SPCC, THICKNESS=0.4mm
- FINISH:**
CONTACT: REFER TO P/N SYSTEM ON MATING AREA
1.27~2.54um NICKEL UNDERPLATE OVERALL
2.54~5.08um PURE TIN ON SOLDER TAIL
SHIELD: REFER TO P/N SYSTEM
- ELECTRICAL SPECIFICATION:**
CURRENT RATING: 0.5A
CONTACT RESISTANCE: 30mΩ MAX
INSULATOR RESISTANCE: 100MΩ MIN(UNMATED) 10MΩ MIN(MATED)
DIELECTRIC WITHSTANDING VOLTAGE: 500 V AC(UNMATED) 300 V AC(MATED)
- ORDER P/N SYSTEM: DP-F202-002-X-X-XX**
MATING AREA PLATING:
1- 0.76um MIN Au.
2- 0.38um MIN Au.
A- Gold FLASH
PACKING METHOD:
N/A- PACKING IN TRAY.
TR- PACKING IN TAPE AND REEL.
SHELL PLATING:
1- GOLD FLASH PLATED.
2- SOLDERABLE NICKEL PLATED.
3- TIN PLATED.
4- SOLDERABLE BLACK NICKEL PLATED.



SECTION A-A



DETAIL E SCALE 2:1



RECOMMENDED PCB LAYOUT (THK=1.6+/-0.15mm) BOTTOM VIEW

ITEM	PART NO.	REQ'D	DESCRIPTION
PARTS LIST			
UNLESS OTHERWISE SPECIFIED TOLERANCES		APPROVAL DATE	
U.S. METRIC		DRAWN Drack	01/19/09
.X +/- ±0.50		CHECKED Tony	01/19/09
.XX +/- ±0.25		CHECKED	
.XXX +/- ±0.20		DRAWING FILE : Drawing/DP/CDPF2020022000X	
FRACTIONS +/-		TITLE	
ANGLES +/-		DISPLAYPORT R/A T/H RECEPTACLE (SHELL DIP)	
FOR MATERIALS AND FINISHES SEE NOTES		SIZE DRAWING NO.	
REMOVE SHARP EDGES		A3 C DP-F202-002-X-X-XX	
DIMENSIONS		REV.	
U.S. INCHES		1	
(METRIC) (MM)		SCALE NONE SHEET 1 OF 1	
ANGLE OF PROJECTION			

Amphenol

DISPLAYPORT R/A T/H RECEPTACLE (SHELL DIP)

SIZE DRAWING NO. A3 C DP-F202-002-X-X-XX REV. 1
SCALE NONE SHEET 1 OF 1