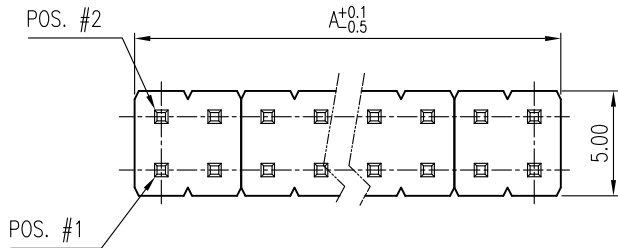


This document is the property of Amphenol Corporation and is delivered on the express condition that is not to be disclosed, reproduced or used, in whole or in part, for manufacture or sale by anyone other than Amphenol Corporation without its prior consent, and that no right is granted to disclose or to use any information in this document.

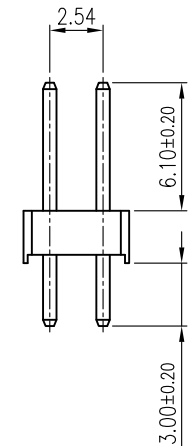
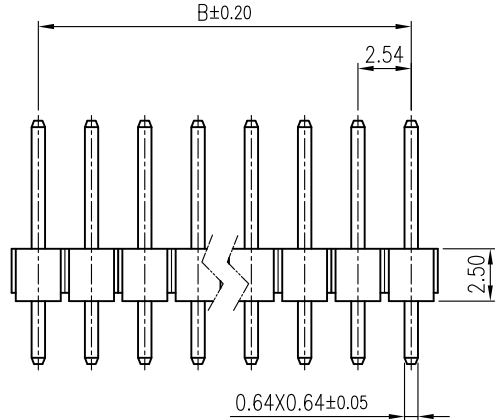
The marking on this product doesn't contain environmental hazardous materials per Material Specification 55-00259 for Sony GP compliant or per directive 2002/95/EC for RoHS compliant.

REVISIONS				
SYM	ECN No.	DESCRIPTION	DATE	APPROVED
A		RELEASE FOR RoHS	01/10/2005	Bodhi Chih
B	NE-09102	CHANGE VENDOR	06/16/2009	Roger Tsai

G800 W 556 XXX EU	2 x 40 = 80	101.6	99.06
G800 W 557 XXX EU	2 x 39 = 78	99.06	96.52
G800 W 558 XXX EU	2 x 38 = 76	96.52	93.98
G800 W 559 XXX EU	2 x 37 = 74	93.98	91.44
G800 W 560 XXX EU	2 x 36 = 72	91.44	88.90
G800 W 561 XXX EU	2 x 35 = 70	88.90	86.36
G800 W 562 XXX EU	2 x 34 = 68	86.36	83.82
G800 W 563 XXX EU	2 x 33 = 66	83.82	81.28
G800 W 564 XXX EU	2 x 32 = 64	81.28	78.74
G800 W 565 XXX EU	2 x 31 = 62	78.74	76.20
G800 W 566 XXX EU	2 x 30 = 60	76.20	73.66
G800 W 567 XXX EU	2 x 29 = 58	73.66	71.12
G800 W 568 XXX EU	2 x 28 = 56	71.12	68.58
G800 W 569 XXX EU	2 x 27 = 54	68.58	66.04
G800 W 570 XXX EU	2 x 26 = 52	66.04	63.50
G800 W 571 XXX EU	2 x 25 = 50	63.50	60.96
G800 W 572 XXX EU	2 x 24 = 48	60.96	58.42
G800 W 573 XXX EU	2 x 23 = 46	58.42	55.88
G800 W 574 XXX EU	2 x 22 = 44	55.88	53.34
G800 W 575 XXX EU	2 x 21 = 42	53.34	50.80
G800 W 576 XXX EU	2 x 20 = 40	50.80	48.26
G800 W 577 XXX EU	2 x 19 = 38	48.26	45.72
G800 W 578 XXX EU	2 x 18 = 36	45.72	43.18
G800 W 579 XXX EU	2 x 17 = 34	43.18	40.64
G800 W 580 XXX EU	2 x 16 = 32	40.64	38.10
G800 W 581 XXX EU	2 x 15 = 30	38.10	35.56
G800 W 582 XXX EU	2 x 14 = 28	35.56	33.02
G800 W 583 XXX EU	2 x 13 = 26	33.02	30.48
G800 W 584 XXX EU	2 x 12 = 24	30.48	27.94
G800 W 585 XXX EU	2 x 11 = 22	27.94	25.40
G800 W 586 XXX EU	2 x 10 = 20	25.40	22.86
G800 W 587 XXX EU	2 x 9 = 18	22.86	20.32
G800 W 588 XXX EU	2 x 8 = 16	20.32	17.78
G800 W 589 XXX EU	2 x 7 = 14	17.78	15.24
G800 W 590 XXX EU	2 x 6 = 12	15.24	12.70
G800 W 591 XXX EU	2 x 5 = 10	12.70	10.16
G800 W 592 XXX EU	2 x 4 = 8	10.16	7.62
G800 W 593 XXX EU	2 x 3 = 6	7.62	5.08
G800 W 594 XXX EU	2 x 2 = 4	5.08	2.54

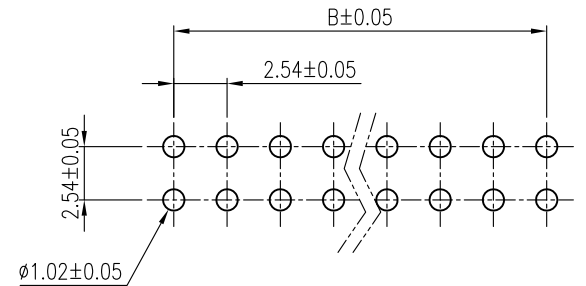


**PRELIMINARY RELEASE
SUBJECT TO CHANGE**



- NOTES:**
- INSULATOR: NYLON-6T, UL 94V-0, COLOR- BLACK
 - CONTACT: BRASS, SELECTIVE GOLD PLATED ON CONTACT AREA, G/F OR TIN PLATED ON SOLDERING AREA (LEAD FREE)
 - THIS PRODUCT DOESN'T CONTAIN ENVIRONMENTAL HAZARDOUS MATERIALS PER DIRECTIVE 2002/95/EC FOR RoHS.

PART NO. G800WXXXXXEU
 NO. OF CIRCUIT — CONTACT FINISH
 005: 15 μ" GOLD
 010: 30 μ" GOLD
 018: FULL GOLD FLASH
 025: 5 μ" GOLD



RECOMMENDED P.C.B. LAYOUT

TOLERANCE		APPROVALS		DATE	TITLE		Amphenol®		
X.		DRAWN	Roger Tsai	06/16/2009	G800 SERIES SINGLE, DUAL ROWS HEADER 2.54MM PITCH STRAIGHT PCB MOUNT		Amphenol Corporation Amphenol Taiwan Corporation		
X.X	±0.30	CHECKED	Daniel Hsieh	06/16/2009					
X.XX	±0.20	APPROVED	Roger Tsai	06/16/2009					
X.XXX	±0.10	ANGULAR ±1°		DWG TYPE	PROJECT CODE	UNIT	SCALE	SIZE	PART No.
UNLESS OTHERWISE SPECIFIED		CUST DWG		HEAD	mm	NA	A3	1 OF 1	G800WXXXXXEU
									G800WXXXXXEU
									REV. B