

This document is the property of Amphenol Corporation and is delivered on the express condition that is not to be disclosed, reproduced or used, in whole or in part, for manufacture or sale by anyone other than Amphenol Corporation without its prior consent, and that no right is granted to disclose or to use any information in this document.

The marking on this product doesn't contain environmental hazardous materials per Material Specification 55-00259 for Sony GP compliant or per directive 2002/95/EC for RoHS compliant.



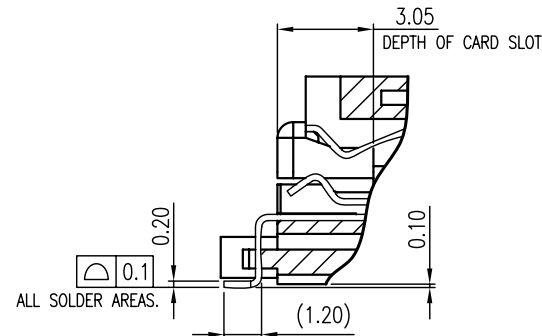
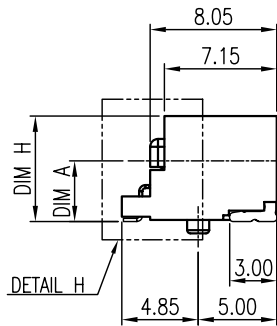
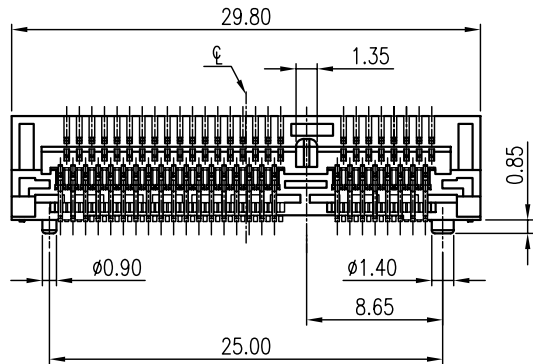
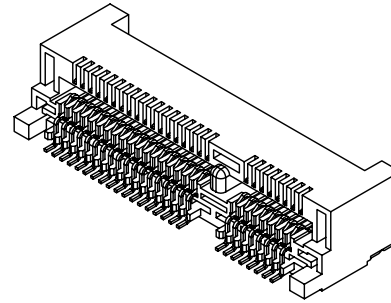
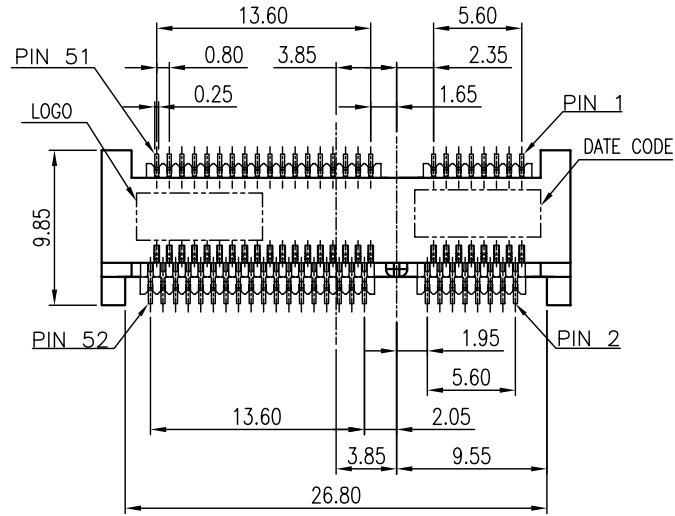
ORIGINAL



REVISIONS				
SYM	ECN No.	DESCRIPTION	DATE	APPROVED
A		UNAPPROVED REVISION	06/25/2009	Arron Lin

NOTES:

- MATERIAL:
HOUSING: HIGH TEMPERATURE THERMAL PLASTIC, LCP, UL94V-0, COLOR: BLACK.
TERMINAL: COPPER ALLOY.
PEG: COPPER ALLOY.
- FINISH:
TERMINAL:
CONTACT AREA: SELECTED GOLD PLATING;
SOLDERING AREA: TIN PLATING 100 μ" THICKNESS MIN.;
UNDER PLATING: NICKEL PLATING 50 μ" THICKNESS MIN. OVERALL.
PEG:
SOLDERING AREA: TIN PLATING 100 μ" THICKNESS MIN.
UNDER PLATING: NICKEL PLATING 50 μ" THICKNESS MIN. OVERALL.
- PACKING IS PER AMTA PACKING SPECIFICATION PKS-G633A001.
- THIS PRODUCT DOESN'T CONTAIN ENVIRONMENTAL HAZARDOUS PER DIRECTIVE 2002/95/EC FOR RoHS COMPLIANT.

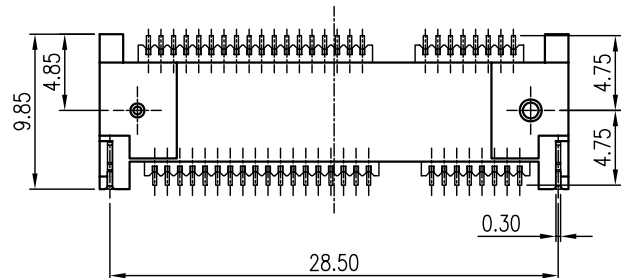


DETAIL H
SCALE 2:1

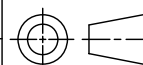
PART NO. G633A0520XX2EU

CONTACT FINISH	HEIGHT OF INSULATOR
0: GOLD FLASH	1: 4.00 MM
1: 10 μ" GOLD	2: 5.20 MM
2: 15 μ" GOLD	4: 8.00 MM
3: 30 μ" GOLD	6: 6.80 MM
	7: 9.20 MM
	8: 6.70 MM
	9: 9.00 MM
	A: 4.85 MM
	B: 4.50 MM

PART NUMBER	DIM. H	DIM. A	DIM. C	DIM. D
G633A0520XB2EU	4.50	2.60	14.44	22.58
G633A0520XA2EU	4.85	2.10	13.94	22.08
G633A0520X92EU	9.00	7.10	18.94	27.08
G633A0520X82EU	6.70	3.85	15.69	23.83
G633A0520X72EU	9.20	7.30	19.14	27.28
G633A0520X62EU	6.80	4.90	16.74	24.88
G633A0520X42EU	8.00	6.00	17.84	25.98
G633A0520X22EU	5.20	3.30	15.14	23.28
G633A0520X12EU	4.00	2.10	13.94	22.08



TOLERANCE	APPROVALS	DATE	TITLE	UNIT	SIZE	PART No.
X. ±0.30	DRAWN Daniel Hsieh	06/25/2009	MINI PCI EXPRESS 52 PIN RECEPTACLE STANDARD RIGHT ANGLE , SMT TYPE	mm	A3	G633A0520XX2EU
X.X ±0.20	CHECKED Roger Tsai	06/25/2009				
X.XX ±0.10	APPROVED Arron Lin	06/25/2009				
X.XXX ±0.10	DWG TYPE CUST DWG	PROJECT CODE SLOT				
ANGULAR ±1°				SCALE NA	SHEET 1 OF 5	DWG No. G633A0520XX2EU
UNLESS OTHERWISE SPECIFIED						REV. A

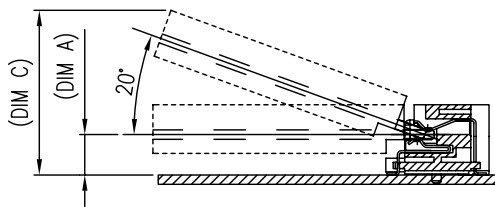


This document is the property of Amphenol Corporation and is delivered on the express condition that is not to be disclosed, reproduced or used, in whole or in part, for manufacture or sale by anyone other than Amphenol Corporation without its prior consent, and that no right is granted to disclose or to use any information in this document.
 The marking on this product doesn't contain environmental hazardous materials per Material Specification 55-00259 for Sony GP compliant or per directive 2002/95/EC for RoHS compliant.

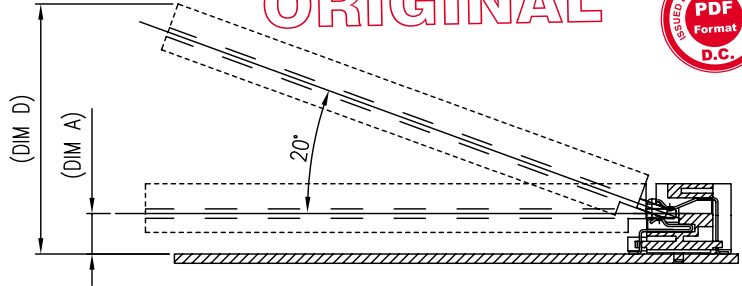
ORIGINAL



REVISIONS				
SYM	ECN No.	DESCRIPTION	DATE	APPROVED
A		UNAPPROVED REVISION	06/25/2009	Arron Lin

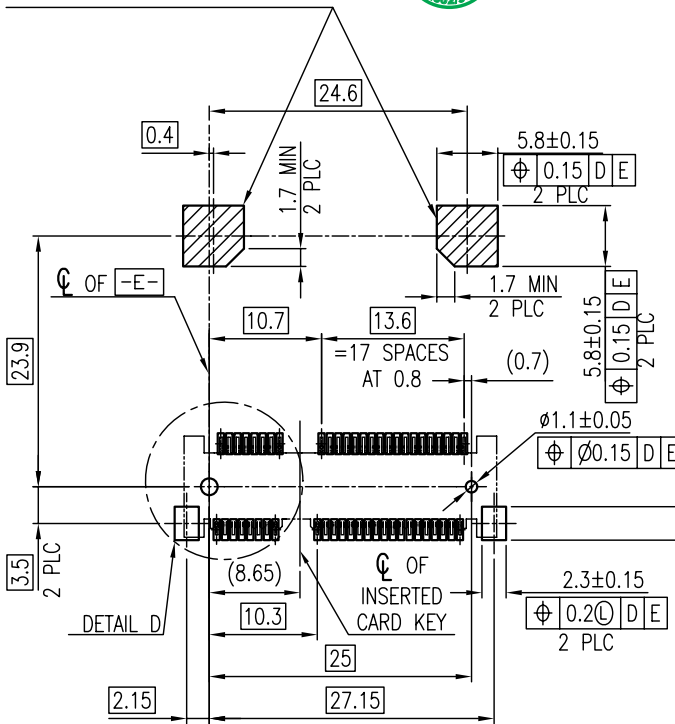


EJECT HEIGHT FOR HALF-MINI-ONLY SOCKET

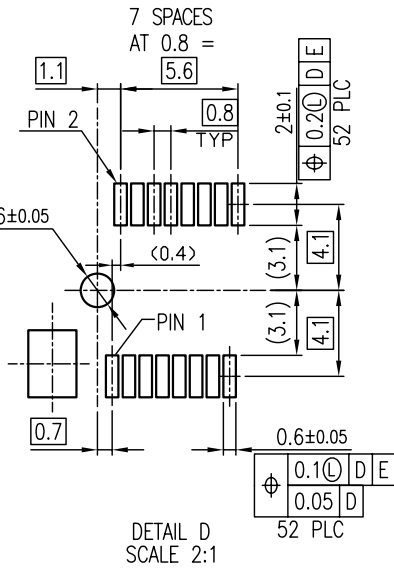


EJECT HEIGHT FOR FULL-MINI-ONLY SOCKET

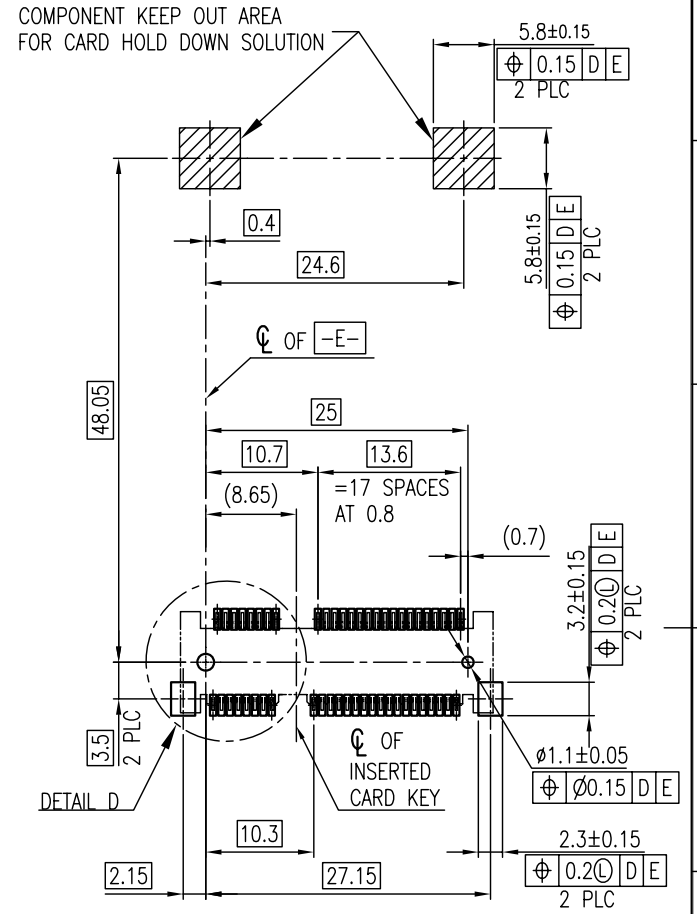
COMPONENT KEEP OUT AREA FOR CARD HOLD DOWN SOLUTION



-D- IS THE TOP SURFACE OF PCB.
 RECOMMENDED P.C. BOARD PATTERN LAYOUT FOR HALF-MINI-ONLY SOCKET (TOP VIEW)



DETAIL D SCALE 2:1



-D- IS THE TOP SURFACE OF PCB.
 RECOMMENDED P.C. BOARD PATTERN LAYOUT FOR FULL-MINI-ONLY SOCKET (TOP VIEW)

TOLERANCE	APPROVALS	DATE	TITLE	Amphenol®	
X. ±0.30	DRAWN Daniel Hsieh	06/25/2009	MINI PCI EXPRESS 52 PIN RECEPTACLE STANDARD RIGHT ANGLE, SMT TYPE	Amphenol Corporation Amphenol Taiwan Corporation	
X.X ±0.20	CHECKED Roger Tsai	06/25/2009			
X.XXX ±0.10	APPROVED Arron Lin	06/25/2009			
ANGULAR ±1°	DWG TYPE CUST DWG	PROJECT CODE SLOT			
UNLESS OTHERWISE SPECIFIED			UNIT mm	SIZE A3	PART No. G633A0520XX2EU
			SCALE NA	SHEET 2 OF 5	DWG No. G633A0520XX2EU
					REV. A

This document is the property of Amphenol Corporation and is delivered on the express condition that is not to be disclosed, reproduced or used, in whole or in part, for manufacture or sale by anyone other than Amphenol Corporation without its prior consent, and that no right is granted to disclose or to use any information in this document.

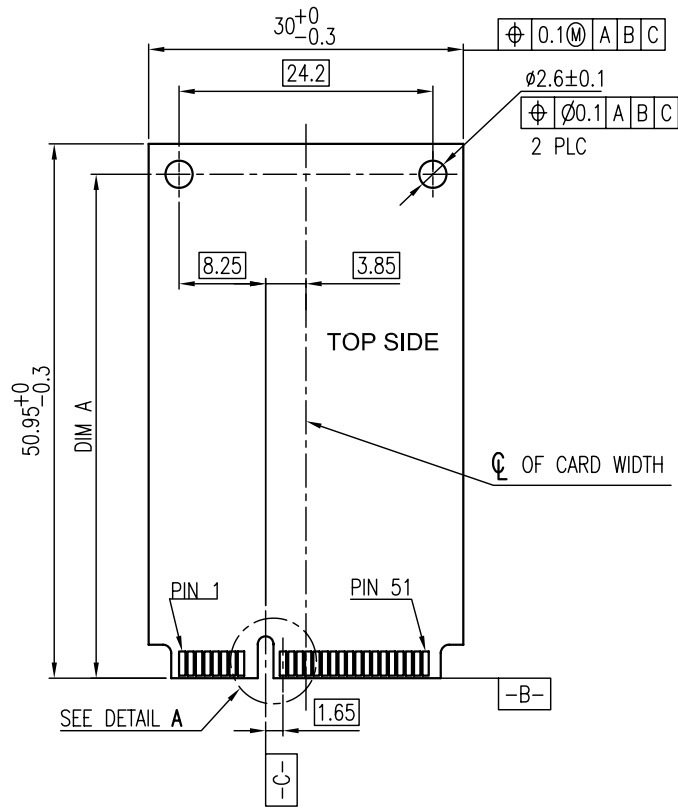
The marking on this product doesn't contain environmental hazardous materials per Material Specification 55-00259 for Sony GP compliant or per directive 2002/95/EC for RoHS compliant.



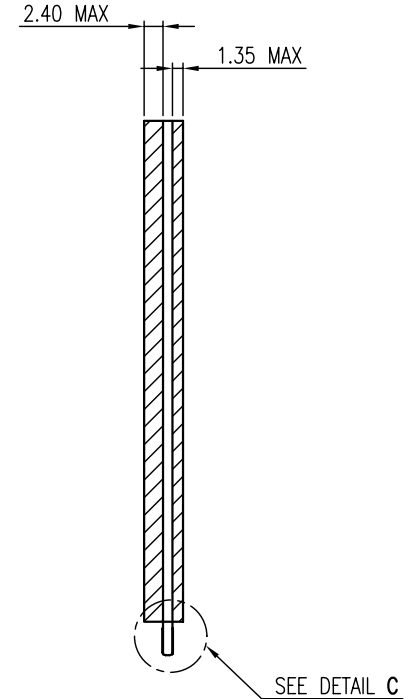
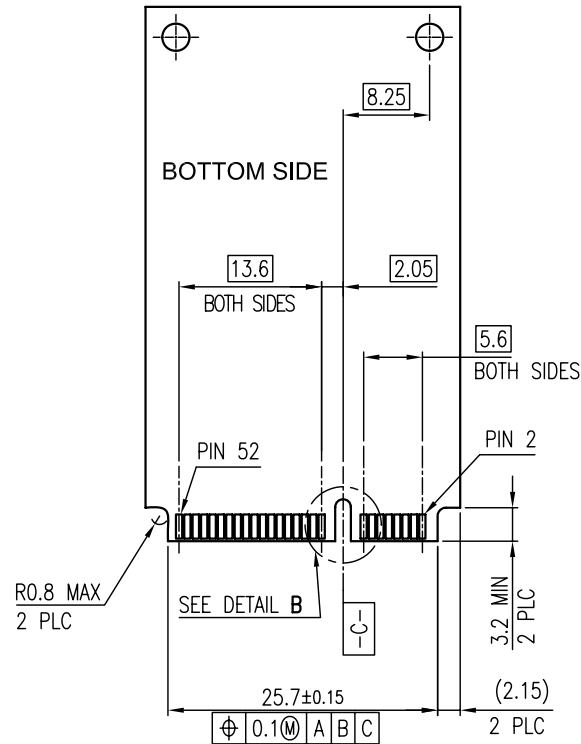
ORIGINAL



REVISIONS				
SYM	ECN No.	DESCRIPTION	DATE	APPROVED
A		UNAPPROVED REVISION	06/25/2009	Arron Lin



PIN NUMBERING REFERENCE:
 ODD PINS-TOP SIDE
 EVEN PINS-BOTTOM SIDE



DIM A	
48.05	FULL-MINI CARD
23.9	HALF-MINI CARD

TOLERANCE	APPROVALS	DATE	TITLE		PART No.	
X. ±0.30	DRAWN Daniel Hsieh	06/25/2009	MINI PCI EXPRESS 52 PIN RECEPTACLE STANDARD RIGHT ANGLE , SMT TYPE		Amphenol® Amphenol Corporation Amphenol Taiwan Corporation	
X.X ±0.20	CHECKED Roger Tsai	06/25/2009				
X.XXX ±0.10	APPROVED Arron Lin	06/25/2009				
ANGULAR ±1°	DWG TYPE CUST DWG	PROJECT CODE SLOT	UNIT mm	SIZE A3	PART No. G633A0520XX2EU	
UNLESS OTHERWISE SPECIFIED			SCALE NA	SHEET 3 OF 5	DWG No. G633A0520XX2EU	REV. A

This document is the property of Amphenol Corporation and is delivered on the express condition that is not to be disclosed, reproduced or used, in whole or in part, for manufacture or sale by anyone other than Amphenol Corporation without its prior consent, and that no right is granted to disclose or to use any information in this document.

The marking on this product doesn't contain environmental hazardous materials per Material Specification 55-00259 for Sony GP compliant or per directive 2002/95/EC for RoHS compliant.

NOTES:

- △ CARD THICKNESS APPLIES ACROSS TABS AND INCLUDES PLATING AND/OR METALLIZATION.
- △ EDGE BEVEL MUST BE PRESENT AND FREE OF CUTTING BURRS FROM PCB AND CONTACT MATERIALS.

ORIGINAL



REVISIONS				
SYM	ECN No.	DESCRIPTION	DATE	APPROVED
A		UNAPPROVED REVISION	06/25/2009	Arron Lin



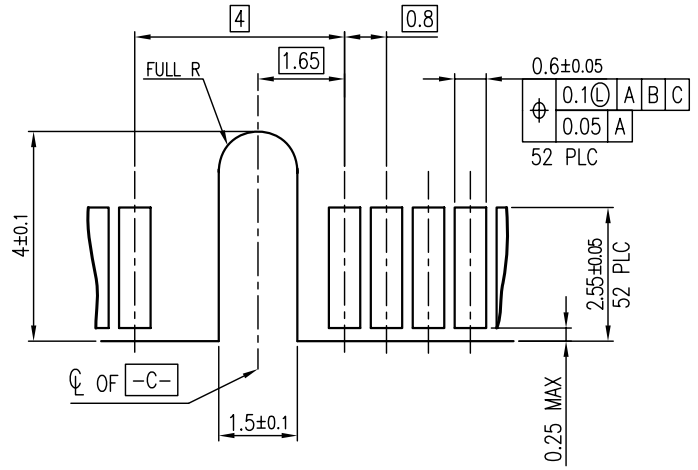
CONNECTOR PIN-OUT DEFINITIONS

PIN#	NAME	PIN#	NAME
51	RESERVED	52	+3.3Vaux
49	RESERVED	50	GND
47	RESERVED	48	+1.5V
45	RESERVED	46	LED_WPAN#
43	GND	44	LED_WLAN#
41	+3.3Vaux	42	LED_WWAN#
39	+3.3Vaux	40	GND
37	GND	38	USB_D+
35	GND	36	USB_D-
33	PETp0	34	GND
31	PETn0	32	SMB_DATA
29	GND	30	SMB_CLK
27	GND	28	+1.5V
25	PERp0	26	GND
23	PERn0	24	+3.3Vaux
21	GND	22	PERST#
19	RESERVED* (UIM_C4)	20	W_DISABLE#
17	RESERVED* (UIM_C8)	18	GND

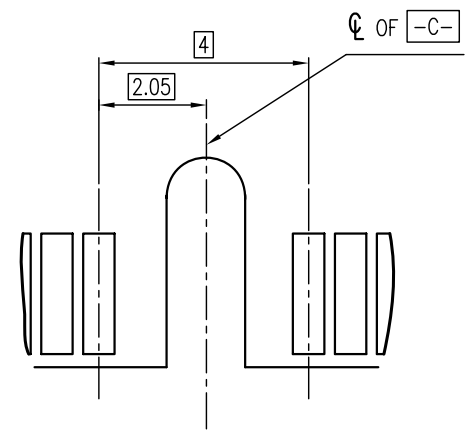
MECHANICAL KEY

15	GND	16	UIM_VPP
13	REFCLK+	14	UIM_RESET
11	REFCLK-	12	UIM_CLK
9	GND	10	UIM_DATA
7	CLKREQ#	8	UIM_PWR
5	COEX2	6	1.5V
3	COEX1	4	GND
1	WAKE#	2	3.3Vaux

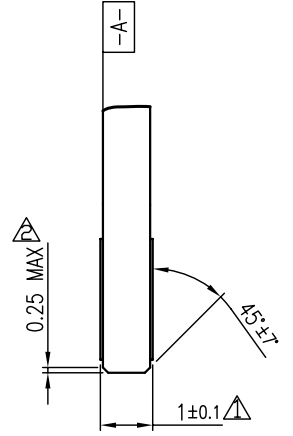
* RESERVED FOR FUTURE UIM INTERFACE (IF NEEDED)



DETAIL A
SCALE 5:1
(TOP SIDE)



DETAIL B
SCALE 5:1
(BOTTOM SIDE)



DETAIL C
SCALE 5:1

TOLERANCE	APPROVALS	DATE	TITLE		Amphenol®			
X. ±0.30	DRAWN Daniel Hsieh	06/25/2009	MINI PCI EXPRESS 52 PIN RECEPTACLE STANDARD RIGHT ANGLE, SMT TYPE		Amphenol Corporation Amphenol Taiwan Corporation			
X.X ±0.20	CHECKED Roger Tsai	06/25/2009						
X.XXX ±0.10	APPROVED Arron Lin	06/25/2009						
ANGULAR ±1°	DWG TYPE CUST DWG	PROJECT CODE SLOT	UNIT mm	SIZE A3	PART No.	G633A0520XX2EU		
UNLESS OTHERWISE SPECIFIED			SCALE NA	SHEET 4 OF 5	DWG No.	G633A0520XX2EU		
					REV.	A		

This document is the property of Amphenol Corporation and is delivered on the express condition that is not to be disclosed, reproduced or used, in whole or in part, for manufacture or sale by anyone other than Amphenol Corporation without its prior consent, and that no right is granted to disclose or to use any information in this document.

The marking on this product doesn't contain environmental hazardous materials per Material Specification 55-00259 for Sony GP compliant or per directive 2002/95/EC for RoHS compliant.

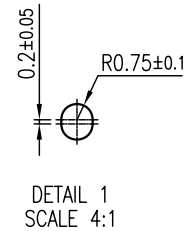
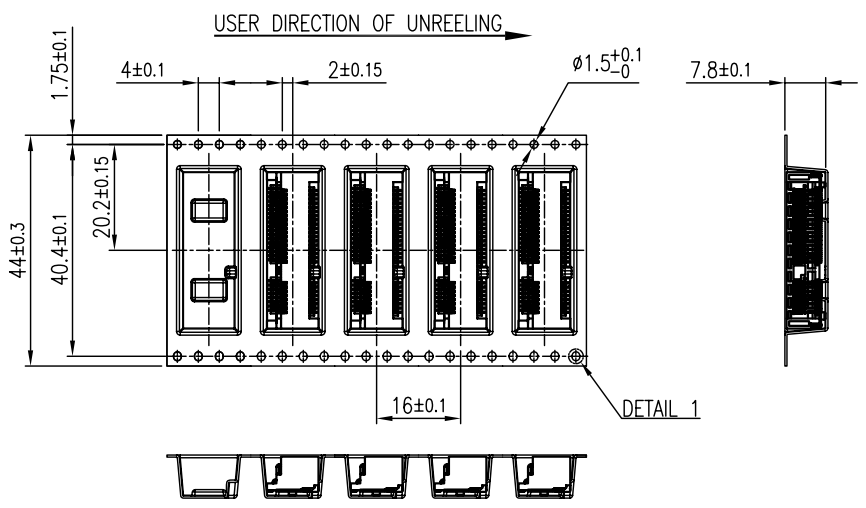
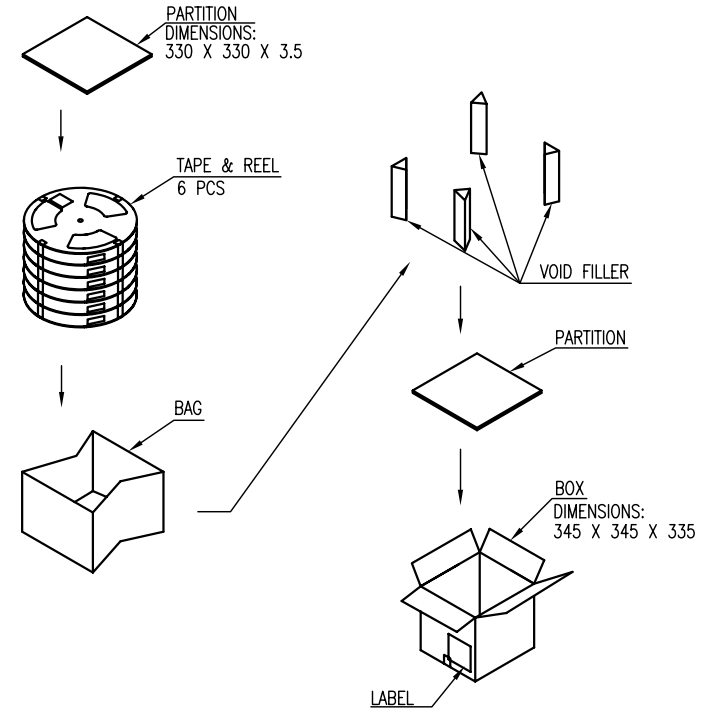
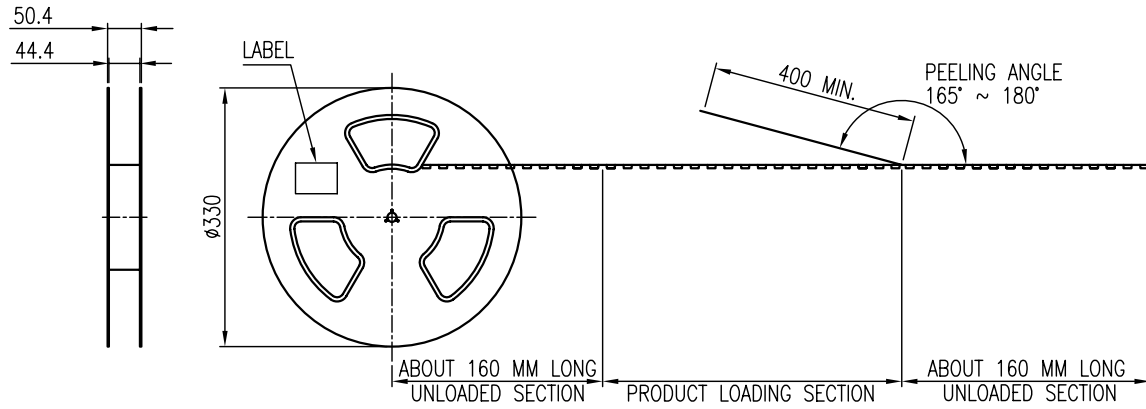


ORIGINAL



REVISIONS				
SYM	ECN No.	DESCRIPTION	DATE	APPROVED
A		UNAPPROVED REVISION	06/25/2009	Arron Lin

- NOTES:
- MATERIAL:
 - BOX: FIBREBOARD, CORRUGATED, DOUBLE WALL.
 - TAPE: POLYSTYRENES, HEAT-RESISTANT TEMPERATURE: 120°C, BLACK COLOR.
 - REEL: POLYSTYRENES, HEAT-RESISTANT TEMPERATURE: 70°C, BLUE COLOR.
 - BAG: POLYETHYLENE, HEAT-RESISTANT TEMPERATURE: 100°C.
 - PEELING STRENGTH: 0.1 ~ 1.3 N (10 ~ 130 GRAMS)
 - PEELING SPEED: 300 mm/min.
 - EACH BAG SHALL BE INCLUDED DESICCANT.



200	9	1800	7.58	3.28	GTXXXXXXCEU
PCS/REEL	REELS/BOX	QUANTITY (PCS)	G/W (Kg)	N/W (Kg)	PART NUMBER

TOLERANCE	APPROVALS	DATE	TITLE	Amphenol® Amphenol Corporation Amphenol Taiwan Corporation				
X. ±0.30	DRAWN Daniel Hsieh	06/25/2009	MINI PCI EXPRESS 52 PIN RECEPTACLE STANDARD RIGHT ANGLE , SMT TYPE		UNIT mm	SIZE A3	PART No. PKS-G633A001	
X.X ±0.20	CHECKED Roger Tsai	06/25/2009						
X.XXX ±0.10	APPROVED Arron Lin	06/25/2009						
ANGULAR ±1°	DWG TYPE CUST DWG	PROJECT CODE SLOT						
UNLESS OTHERWISE SPECIFIED					SCALE NA	SHEET 5 OF 5	DWG No. PKS-G633A001	REV. A