

This document is the property of Amphenol Corporation and is delivered on the express condition that it is not to be disclosed, reproduced or used, in whole or in part, for manufacture or sale by anyone other than Amphenol Corporation without its prior consent, and that no right is granted to disclose or to use any information in this document.

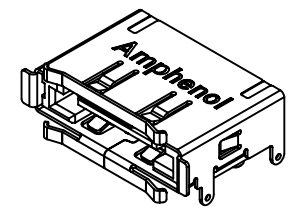
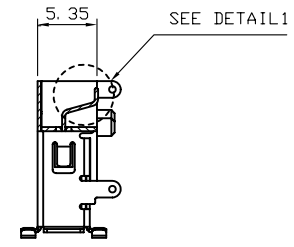
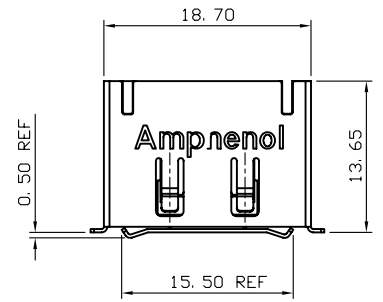
The marking on this product doesn't contain environmental hazardous materials per Material Specification SS-00259 for Sony GP compliant or per directive 2002/95/EC for RoHS compliant.



CUSTOMER DRAWING ORIGINAL



| REVISIONS | | | | |
|-----------|---------|-----------------------|------------|----------|
| SYM | ECN No. | DESCRIPTION | DATE | APPROVED |
| A | | RELEASE TO PRODUCTION | 09/09/2008 | Hank Hsu |

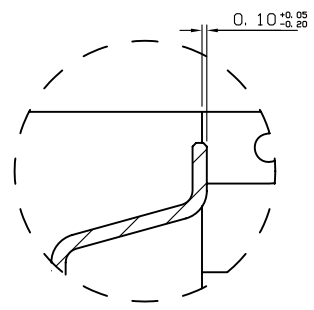
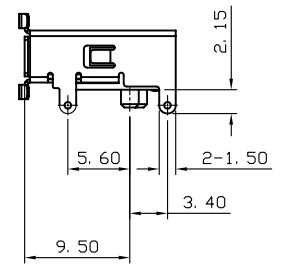
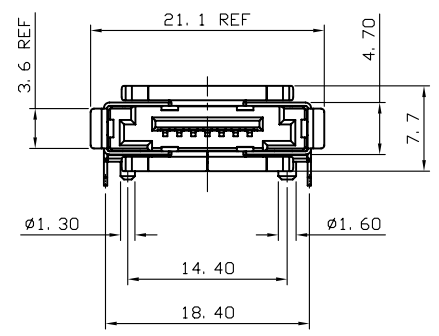


P/N SYSTEM:
G09 1 2 X 1 3 0 X X LF

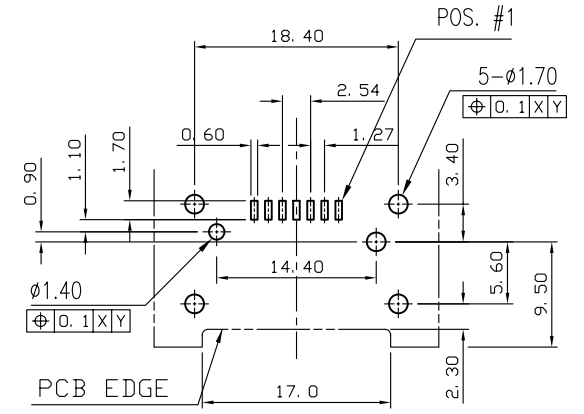
CONTACT FINISH:
3: CONTACT:30u" GOLD; SHELL:NICKEL PLATING + GOLD FLASH
7: CONTACT:GOLD FLASH; SHELL:NICKEL PLATING + GOLD FLASH
8: CONTACT:15u" GOLD; SHELL:NICKEL PLATING + GOLD FLASH

EXTENSION CODE:
BLANK: AMPHENOL LOGO
A: W/O LOGO

PACKAGING CODE:
0: TAPE AND REEL PACKING
4: TAPE AND REEL PACKING+MYLAR



DETAIL 1



RECOMMEND PCB LAYOUT

x.x ±0.05
x.xx ±0.10

- NOTES:**
- INSULATOR: HIGH TEMPERATURE THERMO PLASTIC 30% G.F., UL 94V-0, COLOR- BLACK
 - CONTACT: COPPER ALLOY, 0.3mm THICKNESS, GOLD FLASH PLATED ON CONTACT AREA, TIN PLATED ON SOLDERING TAIL
 - SHELL: COPPER ALLOY, 0.3mm THICKNESS, NICKEL PLATED+GOLD FLASH
 - THIS PRODUCT DOESN'T CONTAIN ENVIRONMENTAL HAZARDOUS MATERIALS PER MATERIAL SPECIFICATION SS-00259 FOR SONY GP
 - PACKING PER AMTA PACKING SPECIFICATION PKS-0001
 - △ ARE CRITICAL DIMENSIONS

| TOLERANCE m/m | APPROVALS | DATE | TITLE | Amphenol® Amphenol Corporation Amphenol Taiwan Corporation | |
|----------------------------|------------------------|----------|--|--|-------------------|
| x. ±0.30 | DRAWN Chenny Yeh | 09/09/08 | G09 SERIES E-SATA CONNECTOR PLUG, 7-POS. R/A SMT, REVERSE | SCALE | N.A. |
| x.x ±0.25 | CHECKED Sondra Sang | 09/09/08 | | SHEET | 1 OF 3 |
| x.xx ±0.15 | APPROVED Hank Hsu | 09/09/08 | | ENGINEERING DWG NO. | T371-G0912X130XLF |
| x.xxx ±0.08 | | | SIZE | A4 | REV. |
| ANGULAR ±2° | | | UNIT | MM | A |
| UNLESS OTHERWISE SPECIFIED | | | PART NO. | G09 12X130XLF | |

This document is the property of Amphenol Corporation and is delivered on the express condition that it is not to be disclosed, reproduced or used, in whole or in part, for manufacture or sale by anyone other than Amphenol Corporation without its prior consent, and that no right is granted to disclose or to use any information in this document.

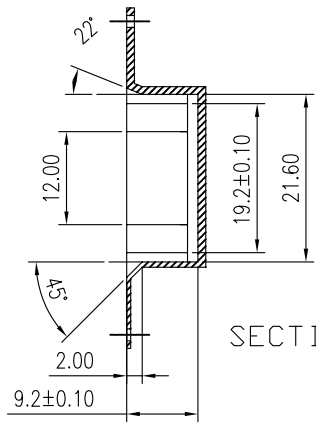
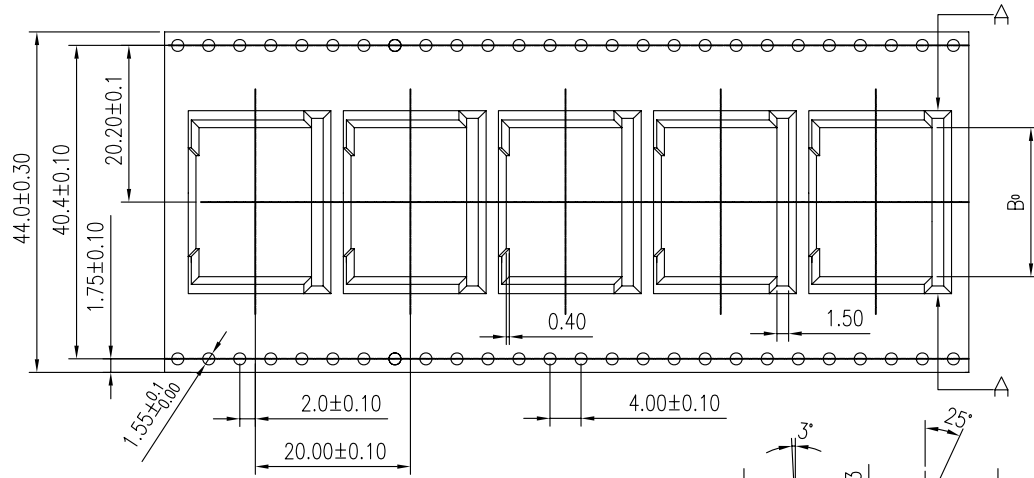
The marking on this product doesn't contain environmental hazardous materials per Material Specification SS-00259 for Sony GP compliant or per directive 2002/95/EC for RoHS compliant.



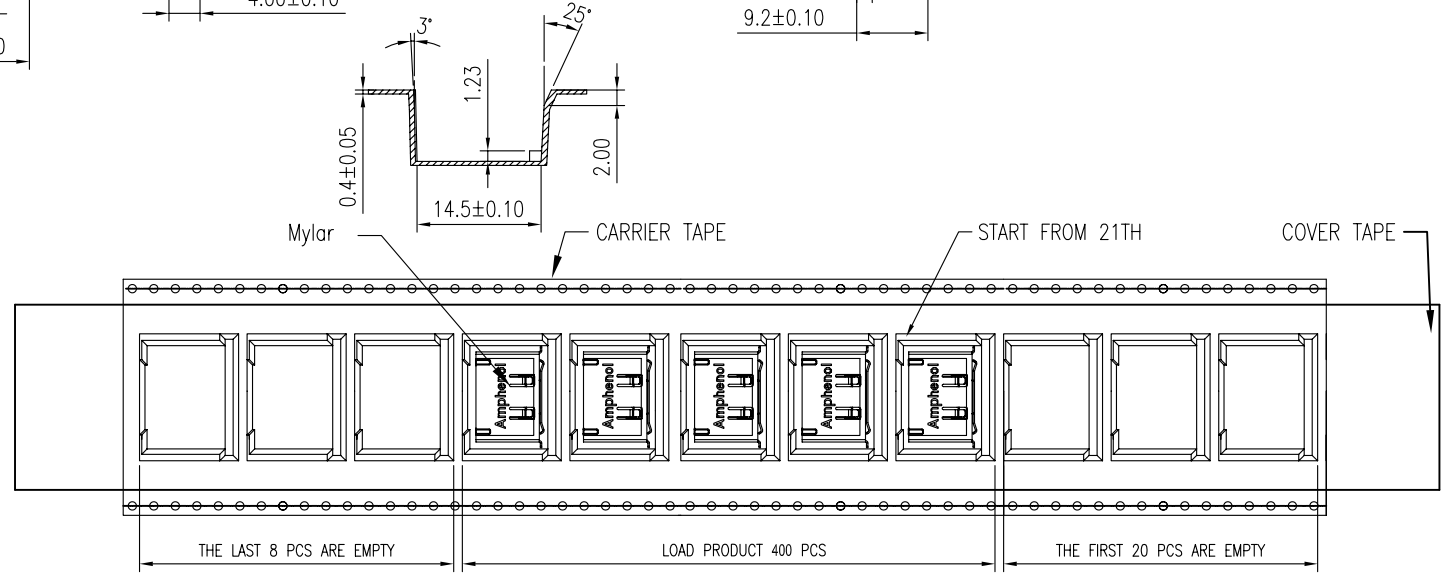
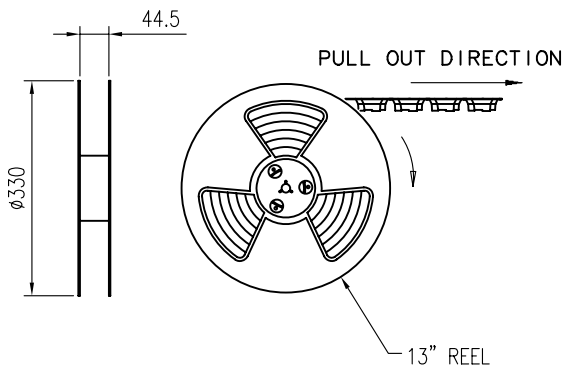
CUSTOMER DRAWING
ORIGINAL



| REVISIONS | | | | |
|-----------|---------|-----------------------|------------|----------|
| SYM | ECN No. | DESCRIPTION | DATE | APPROVED |
| A | | RELEASE TO PRODUCTION | 09/09/2008 | Hank Hsu |



SECTION A-A



NOTES : 注意:
 1. MATERIALS : (1.材料)
 CARRIER TAPE : TRANSPARENT ANTI-STATIC POLYSTYRENE
 (CARRIER TAPE:防静电透明聚苯乙烯)
 COVER TAPE : TRANSPARENT POLYSTYRENE
 (COVER TAPE:透明聚苯乙烯)
 REEL : POLYSTYRENE BLUE (REEL:蓝色聚苯乙烯)

| TOLERANCE m/m | APPROVALS | DATE |
|----------------------------|------------------------|----------|
| x. ±0.30 | DRAWN Chenny Yeh | 09/09/08 |
| x.x ±0.25 | CHECKED Sondra Sang | 09/09/08 |
| x.xx ±0.20 | APPROVED Hank Hsu | 09/09/08 |
| x.xxx ±0.08 | | |
| ANGULAR ±2° | | |
| UNLESS OTHERWISE SPECIFIED | UNIT MM | |

TITLE
 G09 SERIES
 E-SATA CONNECTOR
 PLUG, 7-POS.
 R/A SMT, REVERSE

SIZE
 A4

PART NO.
 G09 12X130XLF

Amphenol®
 Amphenol Corporation
 Amphenol Taiwan Corporation

SCALE N.A. SHEET 2 OF 3

DWG NO.
 T371-G0912X130XLF

REV.
 A

This document is the property of Amphenol Corporation and is delivered on the express condition that it is not to be disclosed, reproduced or used, in whole or in part, for manufacture or sale by anyone other than Amphenol Corporation without its prior consent, and that no right is granted to disclose or to use any information in this document.

The marking on this product doesn't contain environmental hazardous materials per Material Specification SS-00259 for Sony GP compliant or per directive 2002/95/EC for RoHS compliant.

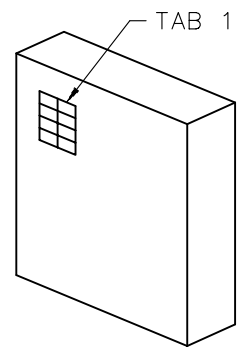
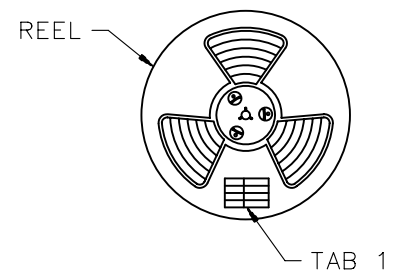


CUSTOMER DRAWING FOR GENERAL PACKING

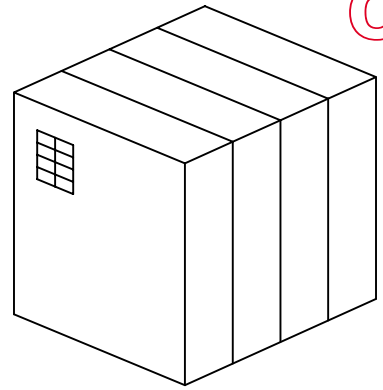
| REVISIONS | | | | |
|-----------|---------|-----------------------|------------|----------|
| SYM | ECN No. | DESCRIPTION | DATE | APPROVED |
| A | | RELEASE TO PRODUCTION | 09/09/2008 | Hank Hsu |



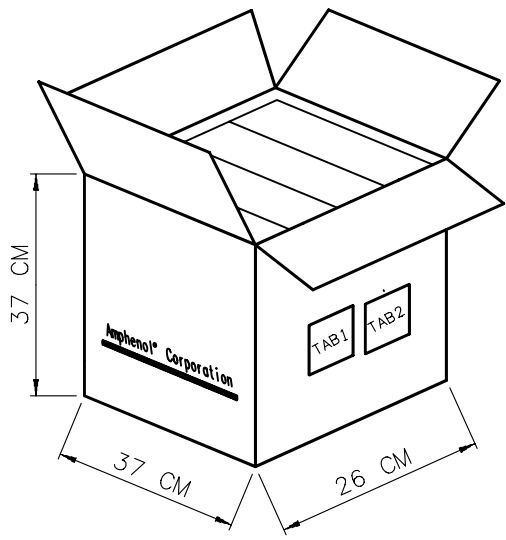
ORIGINAL



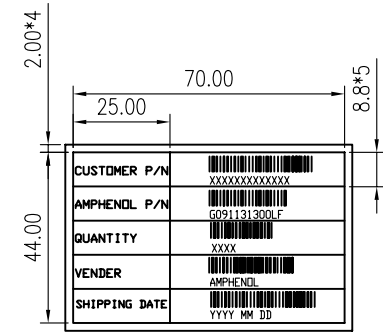
(INNER BOX)



(4 INNER BOXES)

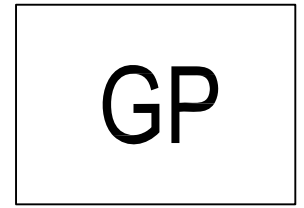


(CARTON)



TAB 1

SCALE:2:1
BAR-CODE SAMPLE



TAB 2

NOTES (注意)

- THIS PRODUCT DOESN'T CONTAIN ENVIRONMENTAL HAZARDOUS MATERIALS PER MATERIAL SPEC. #MS-S001.
(产品不能含有SPEC#MS-S001中规定的有害物质)
- TAB 2: BOTTOM COLOR:GREEN (2.TAB 2:背景色: 绿色)
TEXT COLOR:WHITE (文字颜色:白色)

| ITEM | DESCRIPTION | Q'TY |
|------|--------------|-------------------|
| 4 | PRODUCTS | 1600PCS/ CARTON |
| 3 | INNER CARTON | 4PCS/CARTON |
| 2 | REEL | 1 PC/INNER CARTON |
| 1 | PRODUCTS | 400 PCS/REEL |

| TOLERANCE m/m | | APPROVALS | | DATE | TITLE G09 SERIES E-SATA CONNECTOR PLUG, 7-POS. R/A SMT, REVERSE | Amphenol® Amphenol Corporation Amphenol Taiwan Corporation | | | | | | | |
|----------------------------|-------|-----------|-------------|----------|---|---|------|--------------|---------------|---------|-------------------|------|---|
| x. | ±0.30 | DRAWN | Chenny Yeh | 09/09/08 | | | | | | | | | |
| x.x | ±0.25 | CHECKED | Sondra Sang | 09/09/08 | | | | | | | | | |
| x.xx | ±0.20 | APPROVED | Hank Hsu | 09/09/08 | | | | | | | | | |
| x.xxx | ±0.08 | | | | | SCALE | N.A. | SHEET 3 OF 3 | | | | | |
| ANGULAR | ±2° | | | | | | | | | | | | |
| UNLESS OTHERWISE SPECIFIED | | | | UNIT | MM | SIZE | A4 | PART NO. | G09 12X130XLF | DWG NO. | T371-G0912X130XLF | REV. | A |