

This document is the property of Amphenol Corporation and is delivered on the express condition that is not to be disclosed, reproduced or used, in whole or in part, for manufacture or sale by anyone other than Amphenol Corporation without its prior consent, and that no right is granted to disclose or to use any information in this document.

The marking on this product doesn't contain environmental hazardous materials per Material Specification 55-00259 for Sony GP compliant or per directive 2002/95/EC for RoHS compliant.



ORIGINAL

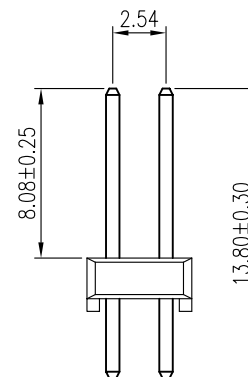
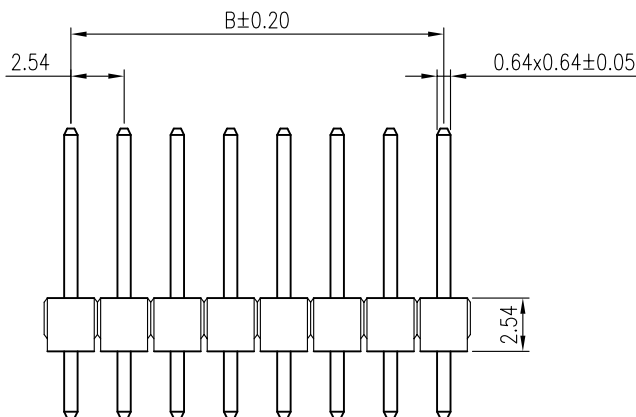
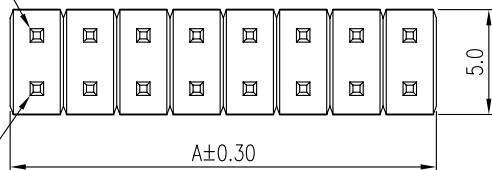


| REVISIONS | | | | |
|-----------|---------|-----------------------|------------|----------|
| SYM | ECN No. | DESCRIPTION | DATE | APPROVED |
| A | | RELEASE TO PRODUCTION | 11/25/2008 | Hank Hsu |

| | | | |
|--------------------|-------------|-------|-------|
| G800 LR 556 XXX EU | 2 x 40 = 80 | 101.6 | 99.06 |
| G800 LR 557 XXX EU | 2 x 39 = 78 | 99.06 | 96.52 |
| G800 LR 558 XXX EU | 2 x 38 = 76 | 96.52 | 93.98 |
| G800 LR 559 XXX EU | 2 x 37 = 74 | 93.98 | 91.44 |
| G800 LR 560 XXX EU | 2 x 36 = 72 | 91.44 | 88.90 |
| G800 LR 561 XXX EU | 2 x 35 = 70 | 88.90 | 86.36 |
| G800 LR 562 XXX EU | 2 x 34 = 68 | 86.36 | 83.82 |
| G800 LR 563 XXX EU | 2 x 33 = 66 | 83.82 | 81.28 |
| G800 LR 564 XXX EU | 2 x 32 = 64 | 81.28 | 78.74 |
| G800 LR 565 XXX EU | 2 x 31 = 62 | 78.74 | 76.20 |
| G800 LR 566 XXX EU | 2 x 30 = 60 | 76.20 | 73.66 |
| G800 LR 567 XXX EU | 2 x 29 = 58 | 73.66 | 71.12 |
| G800 LR 568 XXX EU | 2 x 28 = 56 | 71.12 | 68.58 |
| G800 LR 569 XXX EU | 2 x 27 = 54 | 68.58 | 66.04 |
| G800 LR 570 XXX EU | 2 x 26 = 52 | 66.04 | 63.50 |
| G800 LR 571 XXX EU | 2 x 25 = 50 | 63.50 | 60.96 |
| G800 LR 572 XXX EU | 2 x 24 = 48 | 60.96 | 58.42 |
| G800 LR 573 XXX EU | 2 x 23 = 46 | 58.42 | 55.88 |
| G800 LR 574 XXX EU | 2 x 22 = 44 | 55.88 | 53.34 |
| G800 LR 575 XXX EU | 2 x 21 = 42 | 53.34 | 50.80 |
| G800 LR 576 XXX EU | 2 x 20 = 40 | 50.80 | 48.26 |
| G800 LR 577 XXX EU | 2 x 19 = 38 | 48.26 | 45.72 |
| G800 LR 578 XXX EU | 2 x 18 = 36 | 45.72 | 43.18 |
| G800 LR 579 XXX EU | 2 x 17 = 34 | 43.18 | 40.64 |
| G800 LR 580 XXX EU | 2 x 16 = 32 | 40.64 | 38.10 |
| G800 LR 581 XXX EU | 2 x 15 = 30 | 38.10 | 35.56 |
| G800 LR 582 XXX EU | 2 x 14 = 28 | 35.56 | 33.02 |
| G800 LR 583 XXX EU | 2 x 13 = 26 | 33.02 | 30.48 |
| G800 LR 584 XXX EU | 2 x 12 = 24 | 30.48 | 27.94 |
| G800 LR 585 XXX EU | 2 x 11 = 22 | 27.94 | 25.40 |
| G800 LR 586 XXX EU | 2 x 10 = 20 | 25.40 | 22.86 |
| G800 LR 587 XXX EU | 2 x 9 = 18 | 22.86 | 20.32 |
| G800 LR 588 XXX EU | 2 x 8 = 16 | 20.32 | 17.78 |
| G800 LR 589 XXX EU | 2 x 7 = 14 | 17.78 | 15.24 |
| G800 LR 590 XXX EU | 2 x 6 = 12 | 15.24 | 12.70 |
| G800 LR 591 XXX EU | 2 x 5 = 10 | 12.70 | 10.16 |
| G800 LR 592 XXX EU | 2 x 4 = 8 | 10.16 | 7.62 |
| G800 LR 593 XXX EU | 2 x 3 = 6 | 7.62 | 5.08 |
| G800 LR 594 XXX EU | 2 x 2 = 4 | 5.08 | 2.54 |

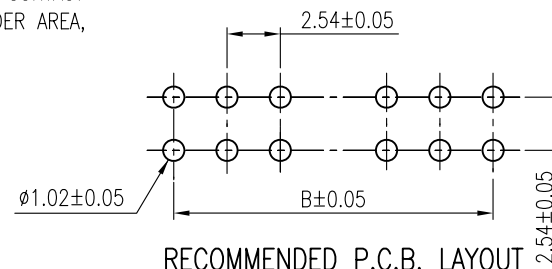
POS. #2

POS. #1



NOTES:

- INSULATOR: LCP, UL 94V-0, COLOR- BLACK
- CONTACT: COPPER ALLOY, SELECTIVE GOLD OR TIN PLATED ON CONTACT AREA, GOLD FLASH OR 100μ" MIN. TIN PLATED ON SOLDER AREA, 50μ" MIN. NICKEL UNDER-PLATING OVERALL
"XXX"- PIN CONTACT PLATING
"005"- 15μ" GOLD
"010"- 30μ" GOLD
"018"- FULL GOLD FLASH
"025"- 5μ" GOLD
"032"- FULL 100μ" TIN
- THIS PRODUCT DOESN'T CONTAIN ENVIRONMENTAL HAZARDOUS MATERIALS PER DIRECTIVE 2002/95/EC FOR RoHS.
- PACKING IS PER AMTA PACKING SPECIFICATION PKS-0001



RECOMMENDED P.C.B. LAYOUT

| TOLERANCE | APPROVALS | DATE | TITLE | UNIT | SCALE | SIZE | PART No. |
|----------------------------|--------------------|----------|--|------|-------|--------|--------------------|
| X. ±0.30 | DRAWN Sondra Sang | 11/25/08 | PIN HEADER, DUAL ROWS 2.54mm PITCH, STRAIGHT PCB MOUNT | mm | NA | A3 | G800 LR XXX XXX EU |
| X.X ±0.20 | CHECKED Chenny Yeh | 11/25/08 | | | | | |
| X.XX ±0.10 | APPROVED Hank Hsu | 11/25/08 | DRAWN CUST DWG | mm | NA | 1 OF 1 | G800LRXXXXXXEU_2 |
| ANGULAR ±1° | DWG | HEAD | | | | | |
| UNLESS OTHERWISE SPECIFIED | | | | | | | REV. A |

Amphenol®

Amphenol Corporation
Amphenol Taiwan Corporation

PART No. G800 LR XXX XXX EU

DWG No. G800LRXXXXXXEU_2

REV. A